

BUFFALO GAUGE INC™

INSTRUMENTATION SERVICES

Your One Stop Instrument Shop



SEP-100D SERIES PLASTIC CASE

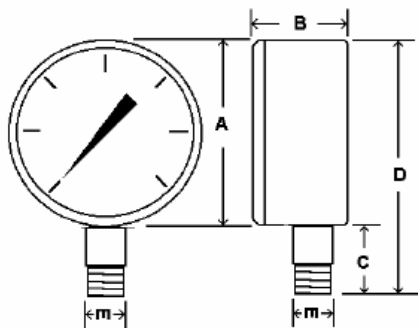
These gauges are designed for applications where plastic cases and brass internals are suitable for use. The abs case and polycarbonate lens offer great appearance and resistance to weather and corrosion attack. Typical applications include water, air and oil.

SPECIFICATIONS:

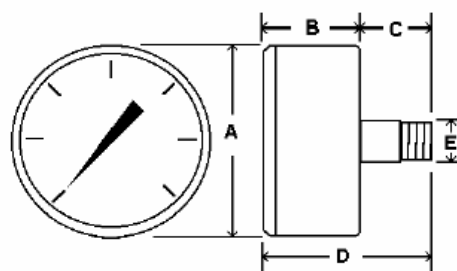
- 2" Dial Size
- 1/4" NPT Connection
- Plastic Case
- Phosphor Bronze Bourdon Tube
- Brass Socket
- Plastic Lens
- 3-2-3 % Accuracy
- Dry Non-Fillable
- Ambient Temperature: -40 to 140°F
- Dual scale:
Easy Read PSI & Bar (x100=kpa) *standard*
Single scale: PSI only *available*
Other: *by special request*



BOTTOM	BACK	RANGE
SEP-101D-204A	SEP-102D-204A	30" HG VAC
SEP-101D-204B	SEP-102D-204B	0/15 PSI
SEP-101D-204C	SEP-102D-204C	0/30 PSI
SEP-101D-204D	SEP-102D-204D	0/60 PSI
SEP-101D-204E	SEP-102D-204E	0/100 PSI
SEP-101D-204F	SEP-102D-204F	0/160 PSI
SEP-101D-204G	SEP-102D-204G	0/200 PSI
SEP-101D-204H	SEP-102D-204H	0/300 PSI



SEP-101D



SEP-102D

Dim	Description	SEP-101D	SEP-102D
A	Case Overall Diameter	2.06" / 53mm	2.06" / 53mm
B	Depth Of Case	1.15" / 29.4mm	1.13" / 28.7mm
C	Stem Length (Including Threads)	.80" / 20mm	.80" / 20mm
D	Overall Height(Bottom) / Depth(Back)	2.82" / 72mm	1.8" / 45.8mm
E	Wrench Flats	.55" / 14mm	.55" / 14mm