

BUFFALO GAUGE INC™

INSTRUMENTATION SERVICES

Your One Stop Instrument Shop



ALTITUDE FEET OF WATER GAUGE

A utility gauge designed for use where water depth or head pressure and/or equivalent psi pressure need to be known. This gauge is suitable for air, water, oil, gas or any other media not corrosive to brass. Other connection locations, mounting styles and accessories available upon request. A complete explanation of use of this gauge is available upon request.

GENERAL DIMENSIONS

3 1/2" or 4 1/2" Dial Size, 1/4"NPT Bottom Conn

GENERAL SPECIFICATIONS:

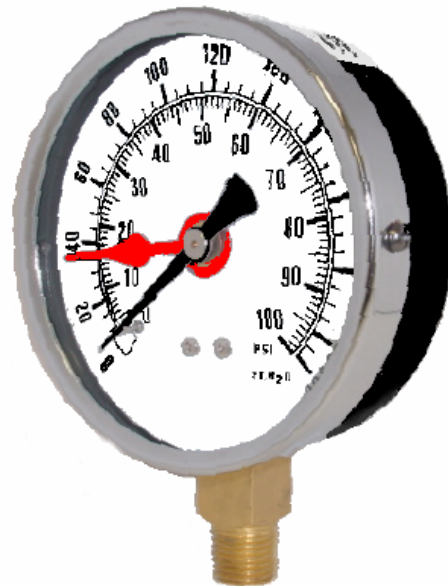
Black Steel Case With Chrome Bezel
 Dual Scale Dial with Adjustable Red Set Hand
 Brass Socket And Movement
 Phosphor Bronze Bourdon Tube
 Dry Non-Fillable
 3-2-3 % Accuracy
 Ambient Temperature: -50 to 160°F

DIAL SCALE:

DUAL SCALE: PSI & FEET of Water Col *STANDARD*

SINGLE SCALE: FEET ONLY *AVAILABLE*

OTHER: (metric, etc) *BY SPECIAL REQUEST*



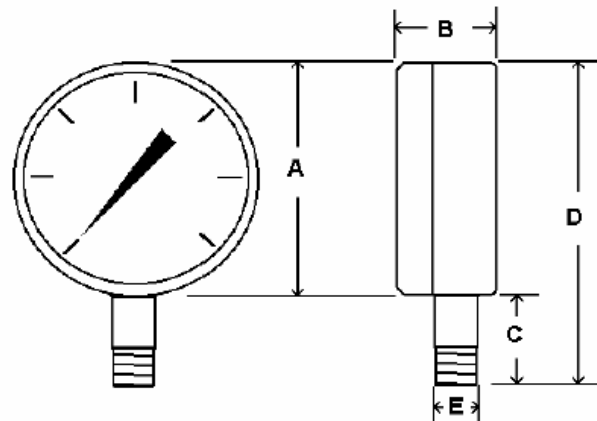
RANGE	CODE	Major Inc.	Ft of water
0/15	B	2 PSI	34'
0/30	C	5 PSI	70'
0/60	D	10 PSI	140'
0/100	E	20 PSI	230'
0/160	F	20 PSI	370'
0/200	G	40 PSI	460'
0/300	H	50 PSI	690'

Note:

- For tower or tank depth or head pressure gauge should be mounted at the lowest possible point as pressure/depth reading is from gauge level up.



- For well depth or tank depth where gauge is mounted above maximum fill line, gauge must be mounted on air line going into top of tank (or well) and straight down vertically to maximum depth to be measured.



		A	B	C	D	E
3 1/2"	In.	3.53"	1.14"	1.02"	4.55"	1/4
	MM	90	29	26	116	
4 1/2"	In.	4.89"	1.16"	1.16"	6.05"	1/4
	MM	124	29	30	154	